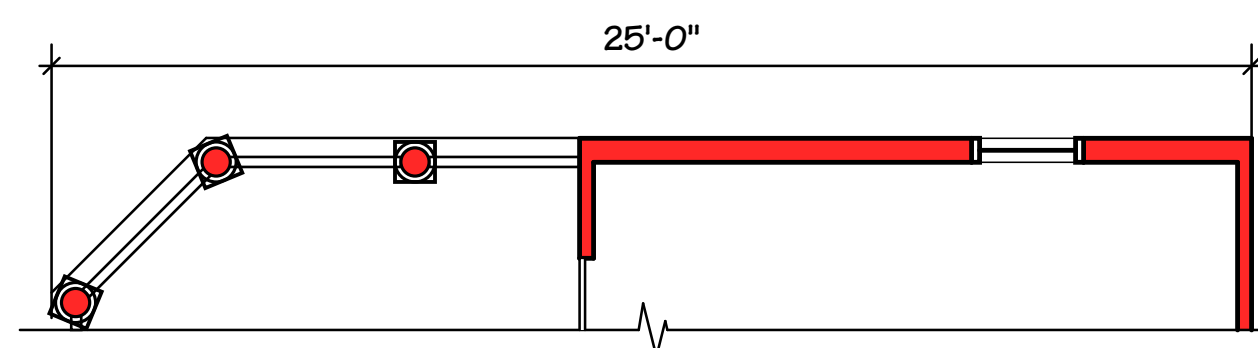
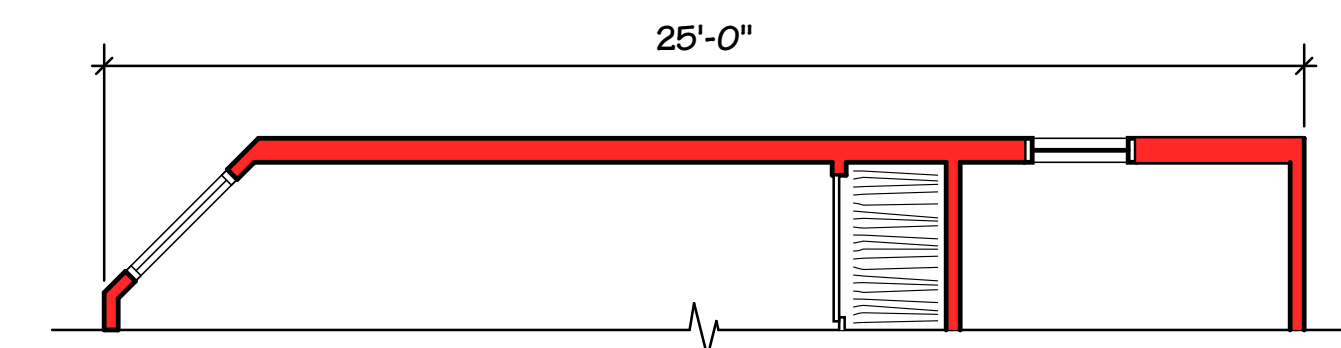


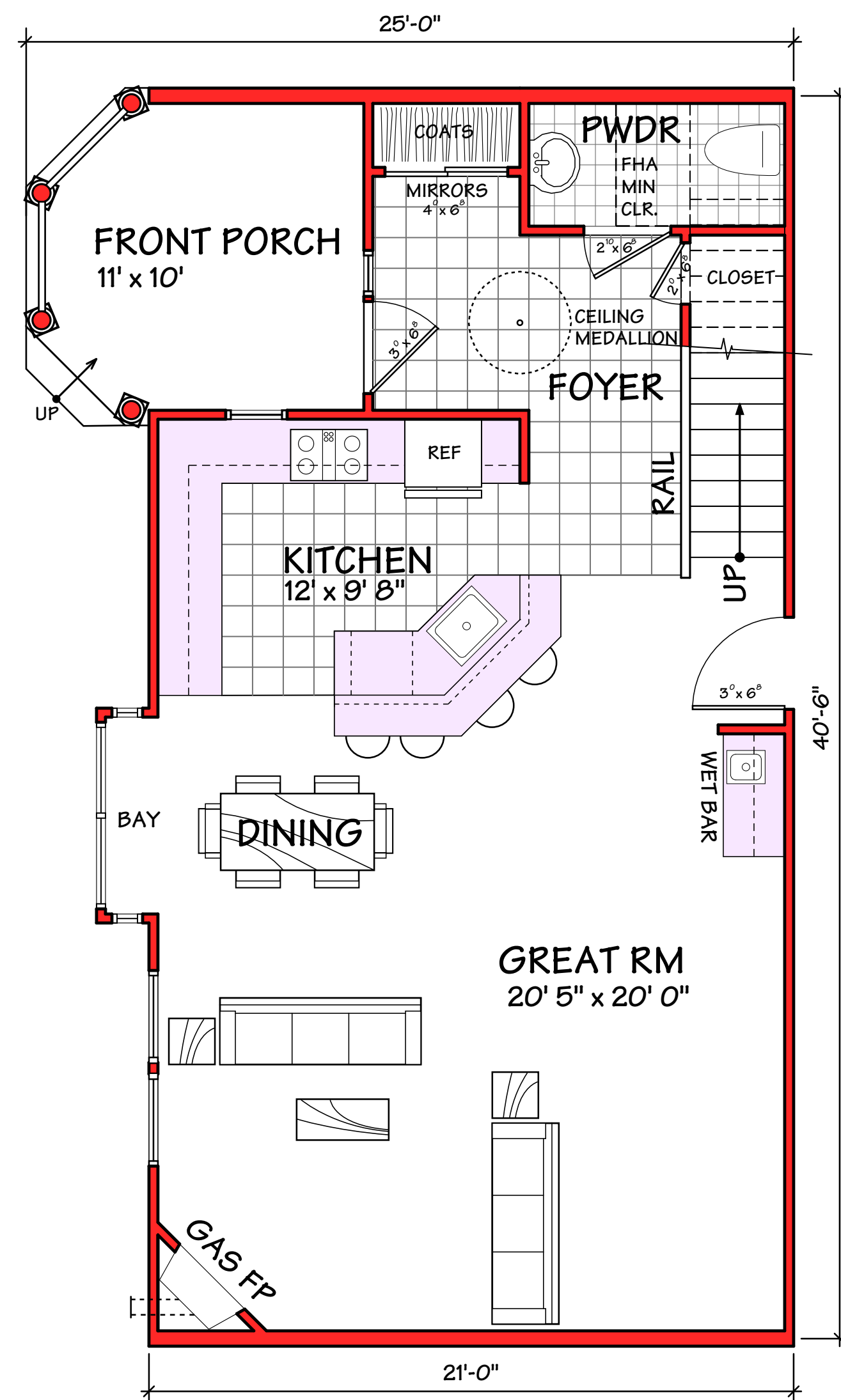
**GROUND FLOOR PLAN
AT END UNIT**



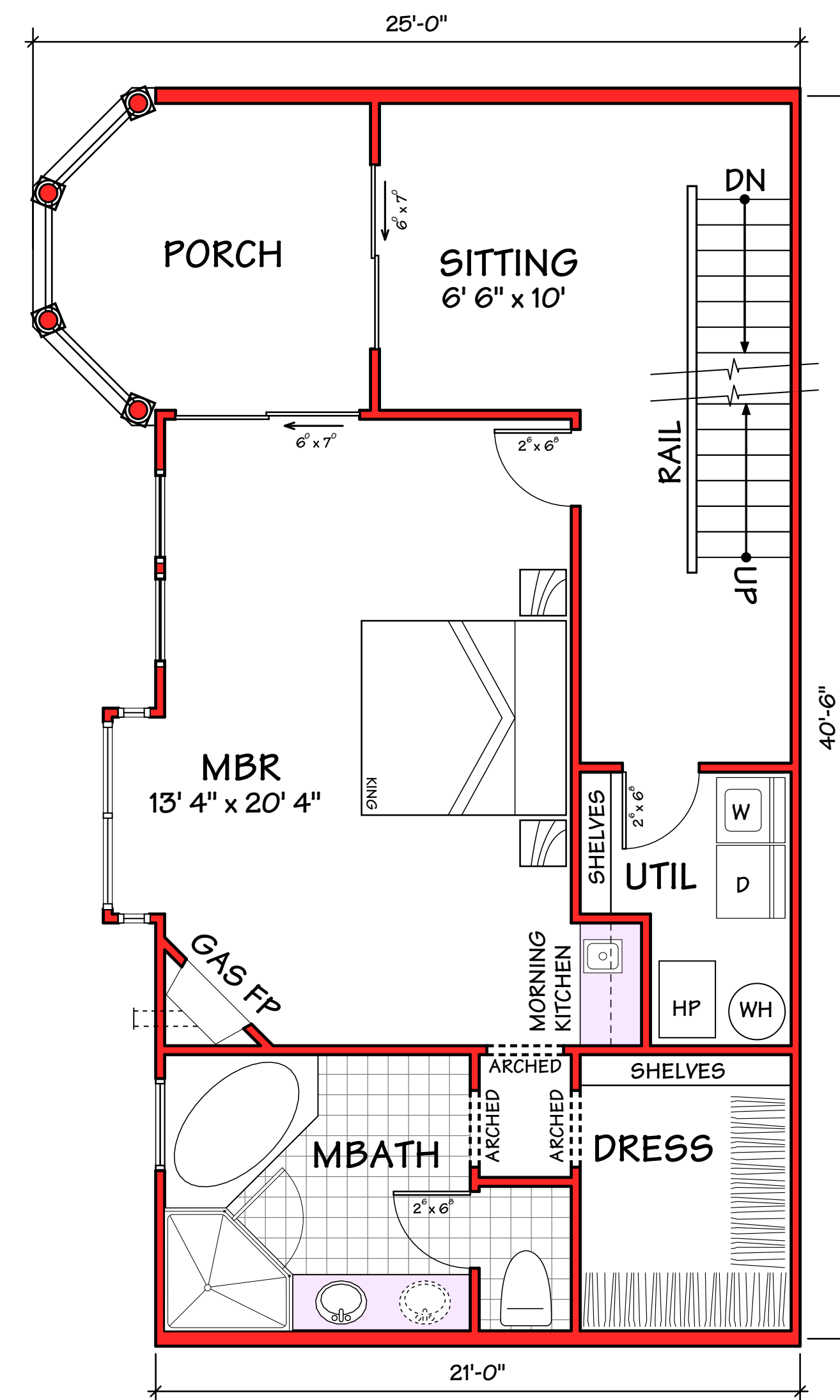
**FIRST FLOOR PLAN
AT END UNIT**



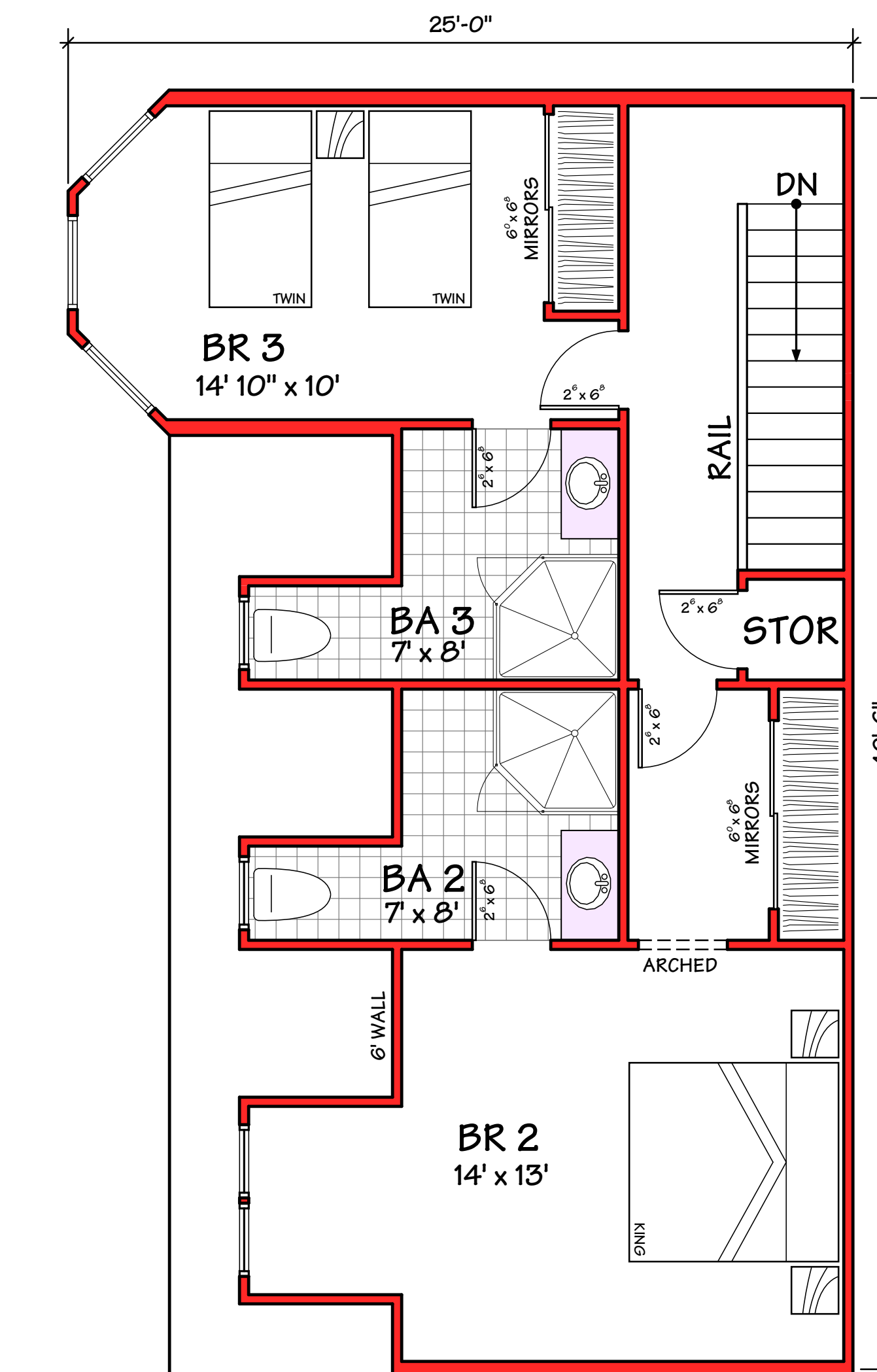
**SECOND FLOOR PLAN
AT END UNIT**



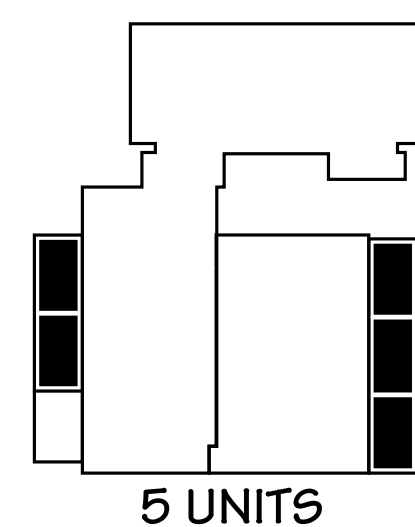
GROUND FLOOR
AREA: 791 SQ FT
PORCH AREA: 105 SQ FT



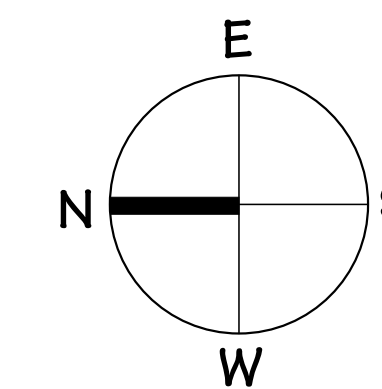
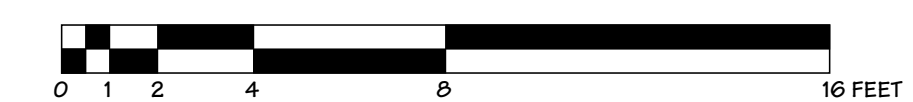
FIRST FLOOR
AREA: 791 SQ FT
BALCONY AREA: 105 SQ FT



SECOND FLOOR
AREA: 763 SQ FT.



UNIT 4A - TYPICAL 3BR TOWNHOUSE



Revisions	FINAL DESIGN SET 10/7/04	
	Belmont Towers Talbot and Dorchester St at Atlantic Blvd Ocean City, MD	
	Robert Wilson Mobley Partnership Architects Village Centre Post Office Box 609 758 Walker Rd Great Falls VA 22066 Phone 703 759 4424 Fax 703 759 3293	
Plotted 10/7/04	Dwn	2.4A
	Ckd RWM	Job No 2405 Date © 10/7/04

UNIT 4A